



## BASET-N, MULTIBASET-N

IP 66



**Application:** emergency model for premises with danger of explosion. Light fixture is certified by FTZU Ostrava-Radvanice (certificate FTZU 04 ATEX 0219X).

**Ballast:** EP – electronic ballast 220-240 V/50-60 Hz AC, 220-240 V DC, 176-280 V DC (min. discharge ignition voltage of lamp  $\geq$  198 V DC). Emergency unit 230 V/50 Hz

**Body:** Plastic material PC (polycarbonate), grey colour RAL7035

**Cover:** Plastic material PC (polycarbonate), transparent colour

**Reflector:** White painted metal sheet RAL 9003

**Fastening:** Direct fastening on ceiling or wall lighted area by means of ceiling fastening brackets (basic equipment), suspension with self-locking suspenders

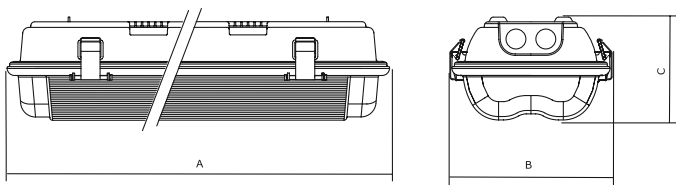
**Connection:** Screwless three-pole terminal block, max. diameter of wires 2,5 mm<sup>2</sup>; light fixture is ready to connect two wires (order additional cable gland)

**Standard equipment:** 1 pc sealing cable gland, 3 pcs sealing plug, 2 pcs fastening spring, double clamp for power cables, stainless steel clips, compact fluorescent lamp DULUX S/E 9 W or DULUX S/E 11 W, pictograms

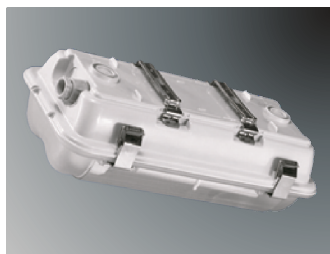
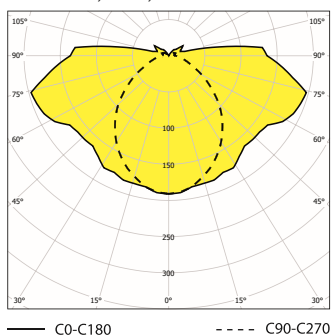
**On request:** AUTOTEST – light fitting equipped with autotest  
NANO – light fixture protected by special nanolayer (hydrophobic, oleophobic or antibacterial protection)

**Marking:** maintained emergency lighting (MULTI), non-maintained emergency lighting (Em)

FTZÚ 04 ATEX 0219X



BASET-N-I-PC, 1x11W, IP 66



		AbxC (mm)	
<b>- non-maintained emergency mode, 0 ≤ ta ≤ 30°C</b>			
052022	BASET-N-I-PC-109, 1x9W, 3h	TC-SEL/2G7	338 x 173 x 105
052040	BASET-N-I-PC-111, 1x11W, 3h	TC-SEL/2G7	338 x 173 x 105

<b>- electronic ballast, maintained emergency mode, 0 ≤ ta ≤ 30°C</b>			
052030	MULTIBASET-N-PC-109-EP, 1x9W, 3h, 2G7	TC-SEL/2G7	338 x 173 x 105
052031	MULTIBASET-N-PC-111-EP, 1x11W, 3h, 2G7	TC-SEL/2G7	338 x 173 x 105

<b>- special equipment</b>	
008060	Cable gland Ex M20x1,5
008097	Plastic nut WISKA EMUG 20 M20x1,5
008090	Sealing plug Ex M20x1,5
051131	Self-locking cable suspender POINTER, VIPET – 2x (2 pcs)
003571	Stainless steel clip POINTER, VIPET
001718	Stainless steel fastening spring POINTER, VIPET – 2x (1 pc)

### Application of light fixtures in areas with danger of explosion

	Marking of external influences	Classification areas	
		Marking	Formation prescription
Danger of explosion of flammable dust	BE3N1	ZONA 22	ČSN EN 60079-14 ČSN EN 60079-10-2
Danger of explosion of flammable gases and vapors	BE3N2	ZONA	ČSN EN 60079-14 ČSN EN 60079-10-1

BASET – N – I		MULTIBASET – N – I	
1x9 W	⊕ II 3G Ex nA IIC T6 Gc ⊕ II 3D Ex tc IIIC T45°C Dc	1x9 W	⊕ II 3G Ex nA IIC T6 Gc ⊕ II 3D Ex tc IIIC T45°C Dc
1x11 W	⊕ II 3G Ex nA IIC T6 Gc ⊕ II 3D Ex tc IIIC T45°C Dc	1x11 W	⊕ II 3G Ex nA IIC T6 Gc ⊕ II 3D Ex tc IIIC T45°C Dc



For areas with with the appearance of oily emulsions, aggressive chemicals, vibration, mechanical stress we recommend to use the fixtures series RAMBO-N, AQUA-N, PITBUL-N or SALUKA-N.